

ARCTIC COMMANDER 2.0

RECOVERY/RECYCLE/RECHARGE MACHINES



INTUITIVE **DESIGN**, ELEVATED **EFFICIENCY**, IMPROVED **PERFORMANCE**



Mastercool[®] Inc.
"World Class Quality"

Introducing Mastercool's enhanced Arctic Commander 2.0 line of R/R/R machines, the culmination of years of expertise in the industry. Our team of engineers have focused on intuitive design, elevated efficiency, and improved performance to set a higher standard.

Experience effortless navigation through detailed function screens with the spacious 10" color touchscreen command center. Through the expansion of internal plumbing and reduction of restrictions, we've achieved remarkable improvements in recovery and charge times. These units will recover 98.5% of the refrigerant in a vehicle which exceeds the SAE standards for purity and is the fastest in the industry.

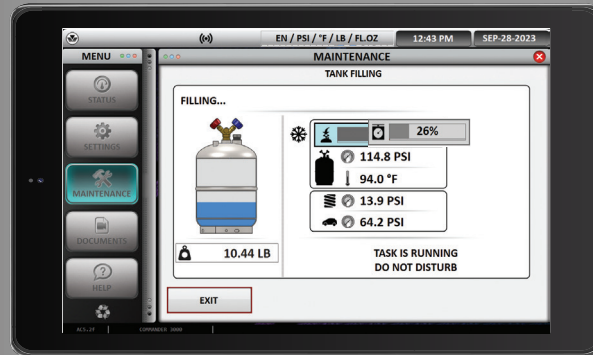
Don't take our word for it, the Arctic Commander 2.0 has undergone rigorous ETL testing, affirming its position as one of the most precise machines on the market. Official test results demonstrate an astonishing accuracy level, with desired charge and recovery quantities achieved with an impressive 1 gram deviation.

Step into the future of R/R/R machines by bidding farewell to outdated models. Replace your aging equipment with the cutting-edge Arctic Commander 2.0 and experience the next level of performance.

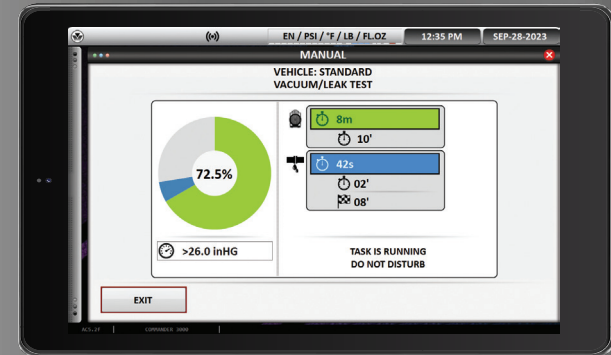
Fully responsive 10" touch screen command center...



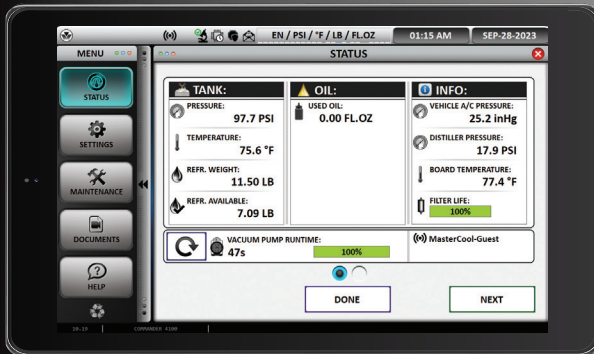
Home Screen
allows for quick touch selection of options



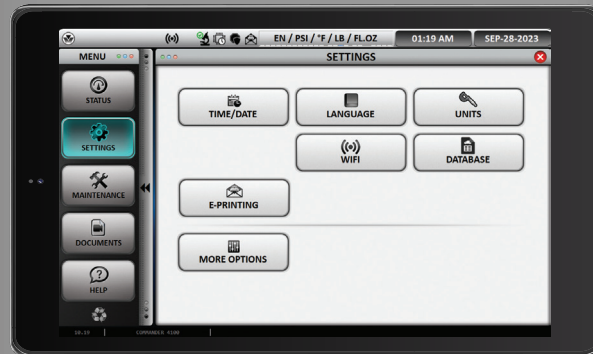
Tank Fill Screen
allows for visual, real time progress of tank filling process



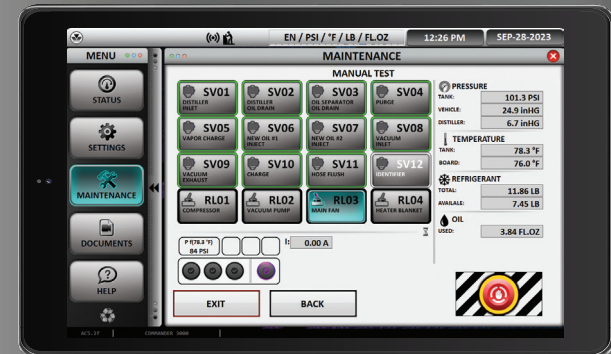
Vacuum/Leak Test Screen
fully customizable options allows the user to personalize the times of vacuum and leak testing



Status Screen
for quick reference of resources



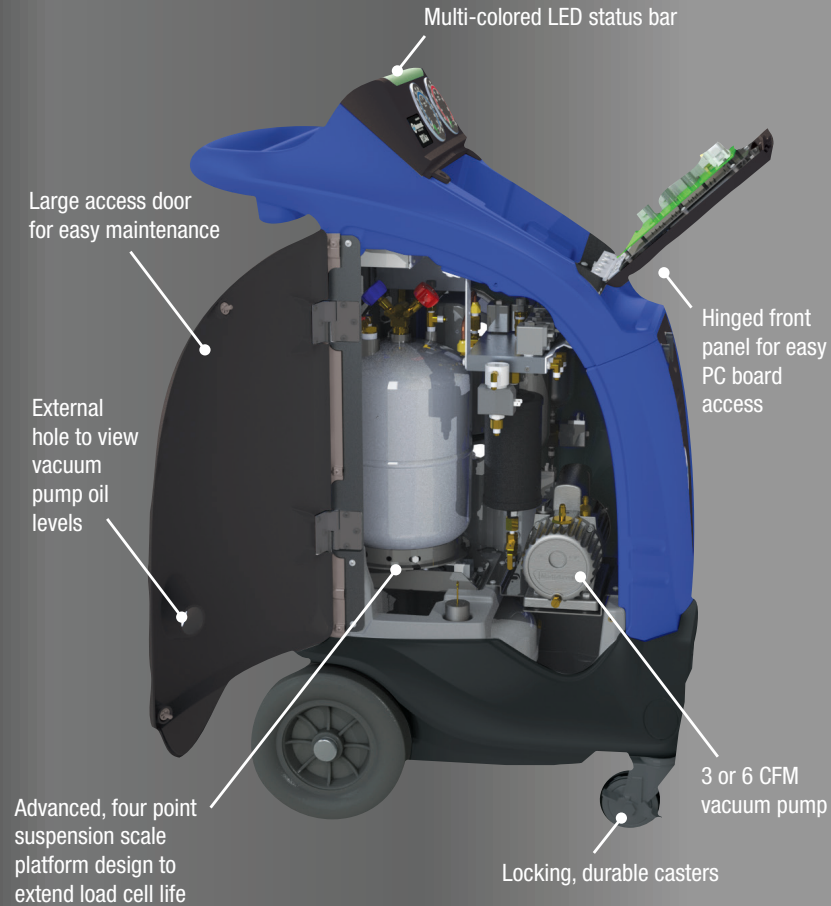
Settings Screen
allows the user to select a default language, units, temperature, volume and weight measurement



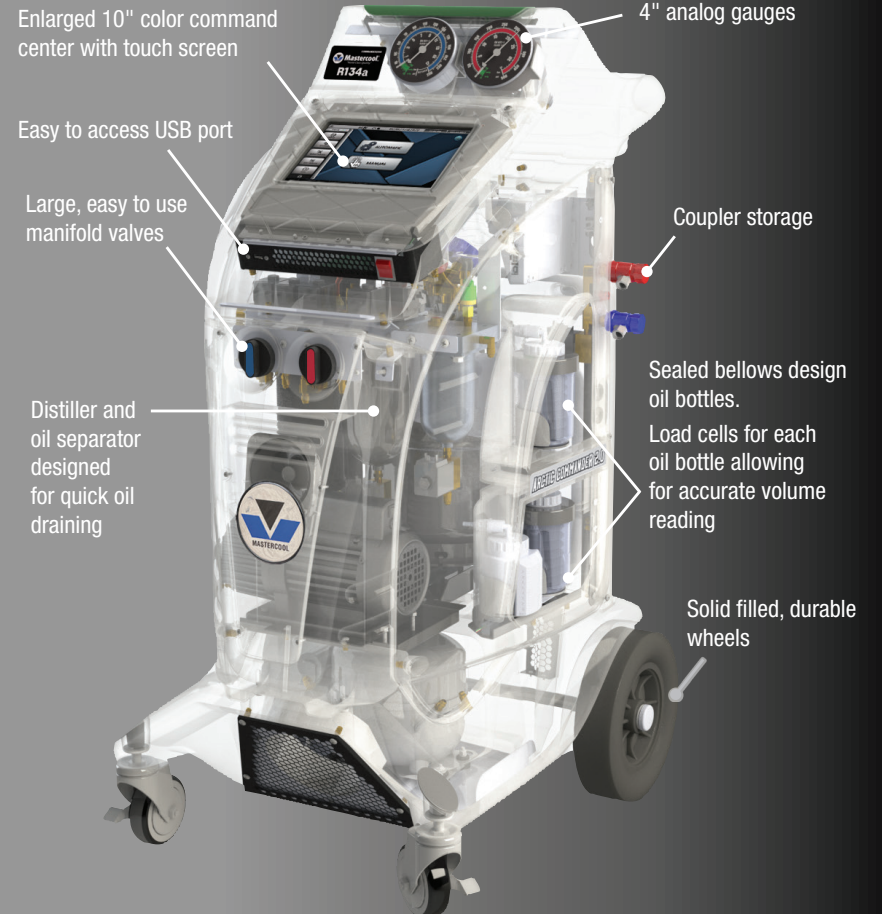
Maintenance Screen
offered only to authorized service technicians allowing for quick and easy diagnosis

Take a look under our hood...

EXCEEDS SAE STANDARDS FOR PURITY AT 98.5%



<p>WI-FI Wi-Fi capability allows for real time, interactive communication and troubleshooting</p>	<p>ON-BOARD UNITS CONVERSION CALCULATOR Easily convert between different units of measure</p>	<p>SELF-DIAGNOSTIC CHECK Upon start-up, unit checks all of the integral functions of the machine</p>
<p>COMPACT DESIGN The machine's compact design makes it easy to maneuver and requires minimal shop space</p>	<p>TANK HEATER Provides quick charging at high or low temperatures</p>	<p>COOLING FAN Dedicated PC board cooling fan keeps the PC board consistently cool</p>



<p>ALARMS AUTO FILTER ALARM Warns that a filter change is required</p> <p>FULL TANK ALARM Notifies when tank is full</p> <p>LOW REFRIGERANT ALARM Notifies when refrigerant is low</p>	<p>AUTOMATIC OIL DISCHARGE Oil is automatically discharged during the recovery process. If oil is present, it will drain into a graduated container clearly displaying the amount of oil that was removed</p>	<p>AUTOMATIC VACUUM LEAK TEST Checks for leaks during the vacuum phase. The operation will be interrupted and a warning will appear if leaks are found</p>

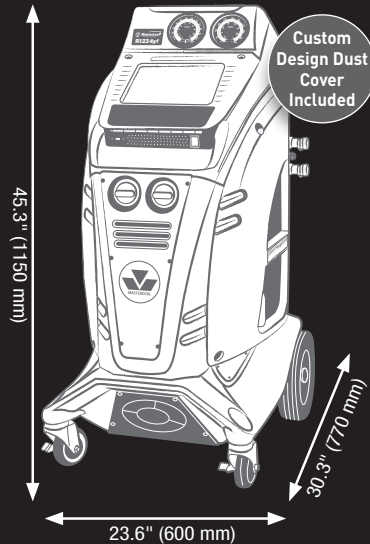
R1234yf & HYBRID

- › **COMMANDER4100** (110V)
- › **COMMANDER4100-E-X** (220V) without a refrigerant identifier
- › **COMMANDER4100-E** (220V)

›› **DESIGN CERTIFIED FOR COMPLIANCE WITH SAE J2843** ‹‹

SPECIFICATIONS:

- Type of Refrigerant: R1234yf
- Service Procedure: Fully automatic or manual
- Voltage: 110 V / 60 Hz or 220 V / 50/60 Hz
- Scale Resolution: 0.02 lb (10 g)
- Oil Scale Resolution: 0.01 lb (5 g)
- Working Temperature Range: 50/120°F (10/49°C)
- Filter System: 1 filter for cleaning and water removal
- Vacuum Pump: 6 CFM (142 liter/min)
- Compressor: Hermetically sealed, 12cc, high pressure
- Recovery: 98.5% at 70 to 75°F (21 to 24°C) <30 minutes
- Recovery Cylinder: 30 lb (12.5 liters), refillable
- Charge Accuracy: ±0.5 oz. at 70 to 75°F (±15 g at 21 to 24°C)
- Hoses: 96" (250 cm)
- Couplers: R1234yf Manual
- Pressure Gauges: Class 1.0
- Cylinder Temperature Sensor: Integrated
- Cylinder Heater: Standard Equipment
- Shipping Dimensions (mm): 1346 (h) x 813 (w) x 965 (d)



FEATURES:

10" Color Command Center with Touch Screen	6 CFM Vacuum Pump
Automatic and Manual Procedures	Refrigerant Identifier
Vehicle Refrigerant Database	Wi-Fi Capable
Automatic Vacuum Leak Test: Programmable	Multiple Languages
Auto Oil Discharge	On-Board Unit Conversion Calculator
Auto and Manual Air Purge	Cabinet Designed for Increased Air Flow
Auto Filter and Full Tank Alarm	Large Analog Gauges
Low Refrigerant Alarm	Hard Wired Power Cord
Auto Oil Injection (220V models only)	Hose Coupler Storage
E-Printing Capability	Solid Durable Wheels with Locking Casters
Hose Flushing	Multi-Colored LED Status Bar
Vehicle A/C System Flushing	Automatic Self-Diagnostic Check
Cylinder Heater	Made in USA



REFRIGERANT IDENTIFIER
Integrated state-of-the-art refrigerant identifier.



HOSE FLUSHING
Eliminates the chance of excess (non-insulating) oils being injected into the A/C system.
Utilized for service of hybrid vehicles.



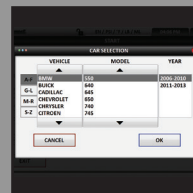
E-PRINTING CAPABILITY
For a comprehensive, emailed report.



ONE BOTTLE*
One used oil bottle.



STATUS LIGHT
Multi-colored LED status bar offers visual confirmation of machine progress.



REFRIGERANT DATABASE
Refrigerant capacities for US, European, Japanese and Korean makes and models.

COMMANDER4100 Automatic R1234yf & Hybrid R/R/R Machine



* 220 V models will include 3 bottles. Two sealed bellows design bottles for selection of oils or dyes and one used oil bottle.

R134a & HYBRID

COMMANDER3100 (110V) ◀
COMMANDER3100-E (220V) ◀

COMMANDER3100 Automatic R134a & Hybrid R/R/R Machine



HOSE FLUSHING

Eliminates the chance of excess (non-insulating) oils being injected into the A/C system.

Utilized for service of hybrid vehicles.



E-PRINTING CAPABILITY

For a comprehensive, emailed report.



ONE BOTTLE*

One used oil bottle.



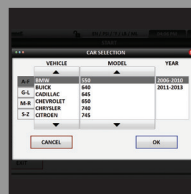
STATUS LIGHT

Multi-colored LED status bar offers visual confirmation of machine progress.



REFRIGERANT DATABASE

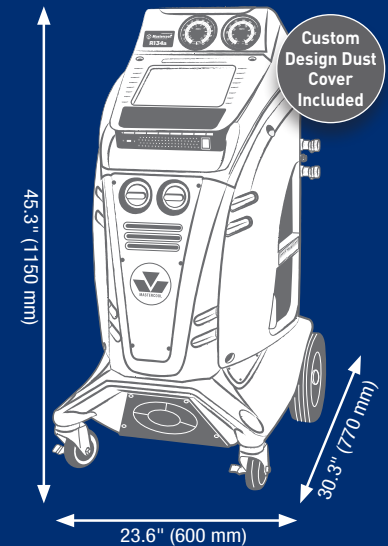
Refrigerant capacities for US, European, Japanese and Korean makes and models.



» DESIGN CERTIFIED FOR COMPLIANCE WITH SAE J2788 ◀◀

SPECIFICATIONS:

- Type of Refrigerant: R134a
- Service Procedure: Fully automatic or manual
- Voltage: 110 V / 60 Hz or 220 V / 50/60 Hz
- Scale Resolution: 0.02 lb (10 g)
- Oil Scale Resolution: 0.01 lb (5 g)
- Working Temperature Range: 50/120°F (10/49°C)
- Filter System: 2 filters for cleaning and water removal
- Vacuum Pump: 6 CFM (142 liter/min)
- Compressor: Hermetically sealed, 12cc, high pressure
- Recovery: 98.5% at 70 to 75°F (21 to 24°C) <30 minutes
- Recovery Cylinder: 30 lb (12.5 liters), refillable
- Charge Accuracy: ±0.5 oz. at 70 to 75°F (±15 g at 21 to 24°C)
- Hoses: 96" (250 cm)
- Couplers: R134a Manual
- Pressure Gauges: Class 1.0
- Cylinder Temperature Sensor: Integrated
- Cylinder Heater: Standard Equipment
- Shipping Dimensions (mm): 1346 (h) x 813 (w) x 965 (d)



FEATURES:

10" Color Command Center with Touch Screen	6 CFM Vacuum Pump
Automatic and Manual Procedures	Wi-Fi Capable
Refrigerant Database	Multiple Languages
Automatic Vacuum Leak Test: Programmable	On-Board Unit Conversion Calculator
Auto Oil Discharge	Cabinet Designed for Increased Air Flow
Auto and Manual Air Purge	Large Analog Gauges
Auto Filter and Full Tank Alarm	Hard Wired Power Cord
Low Refrigerant Alarm	Hose Coupler Storage
Auto Oil Injection (220V models only)	Solid Durable Wheels with Locking Casters
E-Printing Capability	Multi-Colored LED Status Bar
Hose Flushing	Automatic Self-Diagnostic Check
Vehicle A/C System Flushing	Made in USA
Cylinder Heater	

* 220 V models will include 3 bottles. Two sealed bellows design bottles for selection of oils or dyes and one used oil bottle.

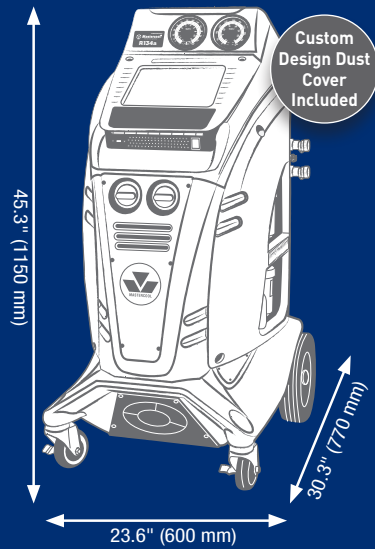
R134a Fully Automatic

- › **COMMANDER2100** (110V)
- › **COMMANDER2100-E** (220V)

›› **DESIGN CERTIFIED FOR COMPLIANCE WITH SAE J2788** ‹‹

SPECIFICATIONS:

- Type of Refrigerant: R134a
- Service Procedure: Fully automatic or manual
- Voltage: 110 V / 60 Hz or 220 V / 50/60 Hz
- Scale Resolution: 0.02 lb (10 g)
- Oil Scale Resolution: 0.01 lb (5 g)
- Working Temperature Range: 50/120°F (10/49°C)
- Filter System: 2 filters for cleaning and water removal
- Vacuum Pump: 6 CFM (142 liter/min)
- Compressor: Hermetically sealed, 12cc, high pressure
- Recovery: 98.5% at 70 to 75°F (21 to 24°C) <30 minutes
- Recovery Cylinder: 30 lb (12.5 liters), refillable
- Charge Accuracy: ±0.5 oz. at 70 to 75°F (±15 g at 21 to 24°C)
- Hoses: 96" (250 cm)
- Couplers: R134a Manual
- Pressure Gauges: Class 1.0
- Cylinder Temperature Sensor: Integrated
- Cylinder Heater: Standard Equipment
- Shipping Dimensions (mm): 1346 (h) x 813 (w) x 965 (d)



FEATURES:

10" Color Command Center with Touch Screen
Automatic and Manual Procedures
Refrigerant Database
Automatic Vacuum Leak Test: Programmable
Auto Oil Discharge
Auto and Manual Air Purge
Auto Filter and Full Tank Alarm
Low Refrigerant Alarm
Auto Oil Injection
Cylinder Heater
6 CFM Vacuum Pump

Wi-Fi Capable
Multiple Languages
On-Board Unit Conversion Calculator
Cabinet Designed for Increased Air Flow
Large Analog Gauges
Hard Wired Power Cord
Hose Coupler Storage
Solid Durable Wheels with Locking Casters
Multi-Colored LED Status Bar
Automatic Self-Diagnostic Check
Made in USA



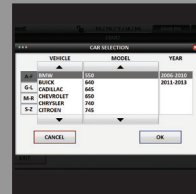
THREE BOTTLES

Two sealed bellows design bottles for selection of oils or dyes.
One used oil bottle.



STATUS LIGHT

Multi-colored LED status bar offers visual confirmation of machine progress.



REFRIGERANT DATABASE

Refrigerant capacities for US, European, Japanese and Korean makes and models.

OPTIONAL UPGRADES:



E-PRINTING CAPABILITY

For a comprehensive, emailed report.

COMMANDER2100

Fully Automatic R134a R/R/R Machine



E-Printer Factory Upgrade:
COMMANDER2100-P (110V)
COMMANDER2100-EP (220V)

E-Printer Field Upgrade:
COMMANDER-EPRINTER

R134a Semi-Automatic

COMMANDER1100 (110V) ◀
COMMANDER1100-E (220V) ◀

COMMANDER1100 Semi-Automatic R134a R/R/R Machine

ONE BOTTLE
One used oil bottle.



OPTIONAL UPGRADES:

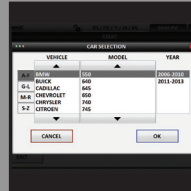
E-PRINTING CAPABILITY

For a comprehensive, emailed report.



REFRIGERANT DATABASE

Refrigerant capacities for US, European, Japanese and Korean makes and models.



E-Printer Factory Upgrade:
COMMANDER1100-P (110V)
COMMANDER1100-EP (220V)

E-Printer Field Upgrade:
COMMANDER-EPRINTER

Refrigerant Database Factory Upgrade:
COMMANDER1100-D (110V)
COMMANDER1100-ED (220V)

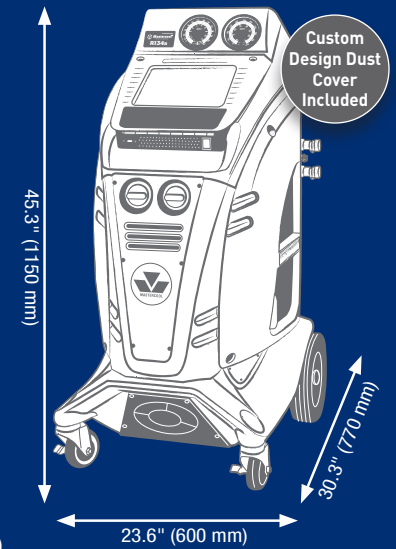
Refrigerant Database Field Upgrade:
COMMANDER-DB

E-Printer and Refrigerant Database Factory Upgrade:
COMMANDER1100-PD (110V)
COMMANDER1100-EPD (220V)

>> DESIGN CERTIFIED FOR
COMPLIANCE WITH SAE J2788 <<

SPECIFICATIONS:

- Type of Refrigerant: R134a
- Service Procedure: Manual
- Voltage: 110 V / 60 Hz or 220 V / 50/60 Hz
- Scale Resolution: 0.02 lb (10 g)
- Working Temperature Range: 50/120°F (10/49°C)
- Filter System: 2 filters for cleaning and water removal
- Vacuum Pump: 3 CFM (70 liter/min)
- Compressor: Hermetically sealed, 12cc, high pressure
- Recovery: 98.5% at 70 to 75°F (21 to 24°C) <30 minutes
- Recovery Cylinder: 30 lb (12.5 liters), refillable
- Charge Accuracy: ±0.5 oz. at 70 to 75°F (±15 g at 21 to 24°C)
- Hoses: 96" (250 cm)
- Couplers: R134a Manual
- Pressure Gauges: Class 1.0
- Cylinder Temperature Sensor: Integrated
- Cylinder Heater: Standard Equipment
- Shipping Dimensions (mm): 1346 (h) x 813 (w) x 965 (d)



FEATURES:

10" Color Command Center with Touch Screen	Multiple Languages
Manual Procedures	On-Board Unit Conversion Calculator
Automatic Vacuum Leak Test: Programmable	Cabinet Designed for Increased Air Flow
Auto Oil Discharge	Large Analog Gauges
Auto and Manual Air Purge	Hard Wired Power Cord
Auto Filter and Full Tank Alarm	Hose Coupler Storage
Low Refrigerant Alarm	Solid Durable Wheels with Locking Casters
Cylinder Heater	Automatic Self-Diagnostic Check
3 CFM Vacuum Pump	Wi-Fi Capable
Made in USA	

One Aspen Drive
Randolph, NJ 07869 USA
Phone: (973) 252-9119
Fax: (973) 252-2455

Zone Waas 2334
Laagstraat 19
9140 Temse, Belgium
Telefon: +32 (0) 3 777 28 48
Telefax: +32 (0) 3 777 40 62

Rua Inácio Luis da Costa, 908 Pq. São
Domingos
05112-010 - São Paulo – SP - Brasil
Phone: (55 11) 4407 4017
Fax: (55 11) 4407 4019

3 Tozer Street
Port Macquarie, NSW 2444
Australia
Phone: +61 417 401412

www.mastercool.com

Director Of Sales: *Idean Barjesteh*
idean@mastercool.com

European Sales:
Luca Moretti
luca@mastercool.com
Jan Vanderhenst
jan@mastercool.com
Paul Kleisz
paul@mastercool.com
Stefania Lacorte
stefania@mastercool.com

Latin American Sales: *Gabriel Aguilera*
gabriel@mastercool.com

Middle East Sales: *Edmund Hopper*
edmund@mastercool.com

India Sales: *Rajiv Gupta*
rajiv@mastercool.com

Brazil Sales: *André Oliveira*
andre@mastercool.com
brasil@mastercool.com
sac@mastercool.com

Asia Pacific Sales: *Mark Byrnes*
mark@mastercool.com
Julie Byrnes
julie@mastercool.com

United States Automotive Sales: *Jeff Wiedecke*
jeff@mastercool.com

United States HVAC Sales: *Chris Carroll*
chris@mastercool.com

