



Mastercool[®] Inc.
"World Class Quality"

COMMANDER4100
COMMANDER4100-E
COMMANDER4100-E-X

R1234yf RECOVERY/RECYCLE/RECHARGE Operating Instructions



WARNING!!

Do not stop the recovery process. Permanent damage will occur that could void the warranty.



DO NOT DISCARD PACKING MATERIAL!

- **VISUALLY INSPECT THE BOX FOR DAMAGE**
- **STORE WOODEN PALLET, BOX AND OTHER PACKING MATERIAL FOR ANY FUTURE SERVICE NEEDS***

DO NOT DISCARD PACKING MATERIAL!

***Original packaging is required if the machine has to be sent back to the factory or authorized service location. If this is not available the factory will send the proper packaging for a fee of \$85.00.**

FIRST TIME USE:

At Mastercool we thoroughly test each machine prior to shipping to ensure that the machine is in perfect working order. Mastercool takes great care in packaging your machine. Despite our tremendous efforts to safeguard your machine during shipping an incident may occur regardless. A defect may develop which is beyond and out of Mastercool's control and knowledge.

Due to these possible occurrences Mastercool requires that the following steps be taken to insure that no damage has occurred during the shipping process that may further potentially cause refrigerant loss.

1. VISUAL INSPECTION:

Please first take a few moments to visually inspect the exterior of the machine and make sure there is no visible damage.

If all seems OK, please open the left side door to visually inspect the inside of the machine for any obvious damage that may have occurred.

2. TANK FILL:

- a. For the first tank fill set the fill amount to 1 pound (0.5 Kg). This will fill the empty space in the machine that cannot be detected by the tank scale.
- b. Next repeat the tank fill with 1 pound (0.5 Kg). Note the total refrigerant amount prior to starting the tank fill process. The weight increase in the total refrigerant amount should closely match the fill amount (+/-20%) that was entered to start the tank fill process.
- c. Note the total refrigerant amount and let the machine sit for 24 hours.
- d. After 24 hours if the total refrigerant amount has not decreased, then tank fill again to the desired total refrigerant amount. If the total refrigerant amount has decreased, then do not add any more refrigerant and call Mastercool's Technical Support.

PLEASE NOTE: If these steps are properly followed there should be no situation of substantial loss of refrigerant. Mastercool will not be responsible for any costs incurred due to refrigerant loss.

We apologize in advance for any inconvenience and appreciate your effort to assist in a satisfactory experience with your new machine.

INTRODUCTION

This machine is ETL Laboratories approved, in compliance with SAE J2843. We are dedicated to solving the issues surrounding the safe containment and proper management of refrigerants. Your new machine incorporates the latest technology and state of the art features to aid you in servicing R1234yf air conditioning and refrigeration systems.

NOTICE: The SAE J2843 standard has, by design made recycling machines more complex than previous models that some End Users might be familiar with. Some noticeable changes that the End User should expect from ALL new recycling machines are the following:

- 1. RECOVERY TIME:** The average recovery time is approximately 30 minutes. This time is necessary to meet the SAE J2843 standard which requires that the machine recovers at least 95% of the AC system refrigerant and cleans the refrigerant to a minimum of 95% purity.
- 2. HOT WEATHER:** As the ambient temperature approaches 100°F, some End Users have experienced an increase in recovery time. This is due to the natural response of R1234yf when its temperature is elevated. R1234yf has difficulty transforming from a gas into a liquid state at elevated temperatures. The transformation into liquid is necessary for the machine to complete the recovery process. The End User might notice the same effect when performing a TANK CHARGING operation. The COMMANDER series includes a color touch screen tablet that may experience a slower processing time in extreme heat and humidity. Avoid exposing the machine to dramatic changes in temperature or humidity.
- 3. COLD WEATHER:** As the ambient temperature approaches 50°F, some End Users have experienced an increase in recovery time. This is due to the natural response of R1234yf when its temperature is lowered. R1234yf has difficulty transforming from a liquid into a vapor state at reduced temperatures. The transformation into vapor is necessary for the machine to complete the distilling process. The End User might notice the same effect when performing a TANK CHARGING operation. The COMMANDER series includes a color touch screen tablet that may experience a slower processing time in extreme cold and humidity. Avoid exposing the machine to dramatic changes in temperature or humidity.
- 4. SUN GLARE:** Because of the way the COMMANDER color touch screen is constructed the user may experience mirror-like screen reflectivity or screen images that are too dim to read in direct sunlight. Whenever possible keep the color touch screen out of direct sunlight.

SAFETY SUMMARY

The following safety information is provided as guidelines to help you operate your new system under the safest possible conditions. Any equipment that uses chemicals can be potentially dangerous to use when safety or safe handling instructions are not known or not followed. The following safety instructions are to provide the user with the information necessary for safe use and operation. Please read and retain these instructions for the continued safe use of your service system.

SAFETY INFORMATION

Every craftsman respects the tools with which they work. They know that the tools represent years of constantly improved designs and developments. The true craftsman also knows that tools are dangerous if misused or abused. To reduce risk of discomfort, illness, or even death, read, understand, and follow the following safety instructions. In addition, make certain that anyone else that uses this equipment understands and follows these safety instructions as well.

READ ALL SAFETY INFORMATION CAREFULLY before attempting to install, operate, or service this equipment. Failure to comply with these instructions could result in personal injury and/or property damage.

RETAIN THE FOLLOWING SAFETY INFORMATION FOR FUTURE REFERENCE.

Published standards on safety are available and are listed at the end of this section under ADDITIONAL SAFETY INFORMATION.

The National Electrical Code, Occupational Safety and Health Act regulations, local industrial codes and local inspection requirements also provide a basis for equipment installation, use, and service.

The following safety alert symbols identify important safety messages in this manual.

When you see one of the symbols shown here, be alert to the possibility of personal injury and carefully read the message that follows.

Never fill the tank to more than 80% of maximum capacity as this will not leave an expansion chamber for

absorbing any pressure increases.



ELECTRICAL SHOCK HAZARDS

- To reduce the risk of electric shock, unplug the power supply cord from the outlet before attempting any maintenance or cleaning. Turning off controls will not reduce this risk.
- Do not operate the machine with a damaged cord or plug — replace the cord or plug immediately. To reduce the risk of damage to electric plug and cord, disconnect the power cord by pulling on the plug rather than the cord

An extension cord should not be used unless absolutely necessary. Use of an improper extension cord could result in a risk of fire, electric shock and component damage. If extension cord must be used, make sure:

- a. That pins on plug of extension cord are the same number, size, and shape as those on the plug of the machine.
- b. That extension cord is properly wired and in good electrical condition; and
- c. That the wire size is large enough for the length of cord as specified below:

Length of cord in feet:	25	50	100	150
AWG size of cord:	16	12	10	8



MOTION HAZARDS

- Engine parts that are in motion and unexpected movement of a vehicle can injure or kill. When working near moving engine parts, wear snug fit clothing and keep hands and fingers away from moving parts. Keep hoses and tools clear of moving parts. Always stay clear of moving engine parts. Hoses and tools can be thrown through the air if not kept clear of moving engine parts.
- The unexpected movement of a vehicle can injure or kill. When working on vehicles always set the parking brake or block the wheels.



FUME HAZARDS

- FUMES, GASES, AND VAPORS CAN CAUSE DISCOMFORT, ILLNESS, AND DEATH! To reduce the risk of discomfort, illness, or death, read, understand, and follow the following safety instructions. In addition, make certain that anyone that uses the equipment understands and follows these safety instructions as well.
- Avoid breathing A/C refrigerant and lubricant vapor mist. Exposure may irritate eyes, nose, and throat. To remove R1234yf from the A/C system, use service equipment certified to meet the requirements of SAE J2843--R1234yf recycling equipment. Additional health and safety information may be obtained from refrigerant and lubricant manufacturers.
- Always perform vehicle service in a properly ventilated area. Never run an engine without proper ventilation for its exhaust.
- Stop the recycling process if you develop momentary eye, nose, or throat irritation as this indicates inadequate ventilation. Stop work and take necessary steps to improve ventilation in the work area.



HEAT/FREEZING HAZARDS

- When under pressure, refrigerants become liquid. When accidentally released from the liquid state they evaporate and become gaseous. As they evaporate, they can freeze tissue very rapidly. When these gases are breathed in, the lungs can be seriously damaged. If sufficient quantities are taken into the lungs, death can result. If you believe you have exposed your lungs to released refrigerant, seek immediate medical assistance.
- Refrigerants can cause frostbite and severe burns to exposed skin. Refrigerants are under pressure and can be forcibly sprayed in all directions if carelessly handled. Avoid contact with refrigerants and always wear protective gloves and make certain other exposed skin is properly covered.
- Refrigerants can also severely injure or cause permanent blindness to unprotected eyes. Refrigerants are under pressure and can be forcibly sprayed in all directions if carelessly handled. Avoid contact with refrigerants and always wear safety goggles.



EXPLOSION/FLAME HAZARDS

- Never recover anything other than the approved refrigerants as specified on the machine. Alternate refrigerants may contain flammables such as butane or propane and can explode or cause a fire. Recovering alternate refrigerants will also void the warranty on your machine.
- For general safety reasons, at the end of the working day or in between services (when services do not immediately follow), see to it that all valves on hoses and the machine are closed.

ADDITIONAL SAFETY INFORMATION

For additional information concerning safety, refer to the following standards.

ANSI Standard Z87.1 — SAFE PRACTICE FOR OCCUPATION AND EDUCATIONAL EYE AND FACE PROTECTION - obtainable from the American National Standards Institute, 11 West 42nd St., New York, NY 10036, Telephone (212) 642-4900, Fax (212) 398-0023 - www.ansi.org

CAUTION: This equipment should be used in locations with mechanical ventilation that provides at least four air changes per hour or the equipment should be located at least 18 inches (457 mm) above the floor, or the equivalent.

CAUTION: Do not pressure test or leak test R234yf service equipment and/or vehicle air conditioning systems with compressed air. Some mixtures of air and R234yf have been shown to be combustible at elevated pressures. These mixtures, if ignited, may cause injury or property damage. Additional health and safety information may be obtained from refrigerant manufacturers.

ATTENTION: Technicians using this equipment must be certified under EPA Section 609 (Environmental Protection Agency).

WARNING: There is the possibility of refrigerant contamination in the refrigerant container or the mobile A/C system being serviced or refrigerant container. Before recycling use proper equipment such as a refrigerant identifier, if necessary.

NOTE: Use only new refrigerant oil to replace the amount removed during the recycling process. Used oil should be discarded per applicable federal, state, and local requirements.

The manufacturer shall not be responsible for any additional costs associated with a product failure including, but not limited to, loss of work time, loss of refrigerant, cross contamination of refrigerant, and unauthorized shipping and/or labor charges.

IMPORTANT: R1234yf systems have special fittings (per SAE specifications) to avoid cross-contamination with other systems. DO NOT adapt your unit for a different refrigerant — system failure will result.

PERIODICALLY INSPECT AND MAINTAIN REFRIGERANT HOSES AND SEALS TO ENSURE THAT HOSES AND SEALS PREVENT THE ADDITION OF EXCESS AIR, DUE TO LEAKS, DURING THE RECOVERY PROCESS, WHICH WOULD INCREASE THE NCG LEVEL IN THE RECOVERED REFRIGERANT.

CERTIFICATION

All technicians opening the refrigeration circuit in automotive air conditioning systems must now be certified in refrigerant recovery and recycling procedures to be in compliance with Section 609 of the Clean Air Act Amendments of 1990. For information on certification call MACS Worldwide at (215) 631-7020.

ABOUT THIS MANUAL

This manual includes a SAFETY SUMMARY, MACHINE PREPARATION FOR USE, OPERATION procedures, and MAINTENANCE instructions, for your Air Conditioning Service Center. Anyone intending to use the machine should become familiar with ALL the information included in this manual (especially the SAFETY SUMMARY) before attempting to use it.

Before operating this machine for the first time, perform all Setup instructions. If your new machine is not properly prepared to perform a service, your service data could be erroneous. In order to properly perform a complete air conditioning service, follow all procedures in the order presented. Please take the time to study this manual before operating the machine. Then keep this manual close at hand for future reference. Please pay close attention to the SAFETY SUMMARY and all WARNINGS and CAUTIONS provided throughout this manual.

ABOUT YOUR AIR CONDITIONING RECOVERY/RECYCLE SERVICE CENTER

Your machine incorporates a highly accurate electronic scale for determining charging weights, etc. Other
www.mastercool.com

functions can also be performed with the electronic scale as you will discover during the operating procedures. Either standard or metric units of measure can be selected.

WARRANTY

This product is warranted against any defect in materials and/or construction for a period of 1 (one) year from the date of activation.

The machine is automatically activated upon initial startup. This activation will record the date and time your machine is turned on and establishes the warranty. Please reference the serial number and tag number in any warranty requests. This information can be found by pressing the >> on the middle, left side of the command center to access the main menu, then selecting help.

The warranty consists of free-of-charge replacement or repair of defective component parts or parts considered defective by the Manufacturer. Reference to the machine serial number must be included in any requests for spare parts. This warranty does not cover defects arising from normal wear, incorrect or improper installation, or phenomena not inherent to normal use and operation of the product.

NOTE: Regarding the above, the Manufacturer reminds the Customer that according to international and national laws and regulations in force the goods are shipped at the sole risk of the latter and, unless otherwise specified in the confirmation of order phase, the goods are shipped uninsured. The Manufacturer therefore declines any and all responsibility in merit of CLAIMS for damages due to shipping, loading and unloading, and unpacking.

The product for which repair under guarantee is requested must be shipped to the manufacturer under the customer's exclusive responsibility and at the customer's exclusive expense and risk. In order to avoid damage during shipping for repairs, the Manufacturer's original packing must always be used.

The manufacturer declines any and all responsibility for damage to vehicles on which recovery/recycling and recharging are performed if said damage is the result of unskillful handling by the operator or of failure to observe the basic safety rules set forth in the instruction manual.

The warranty will expire automatically at the end of the 12 month period or whenever one of the following occurs: failure to perform maintenance; use of improper maintenance procedures; use of unsuitable lubricants and/or tracer fluids; inept or improper use; repairs performed by unauthorized personnel and/or with non-original spare parts; damage caused by shocks, fires, or other accidental events.

All warranty information referenced is valid in the United States only. For information pertaining the warranty outside of the United States, please contact your local distributor.

GENERAL INFORMATION

Machine identification information is printed on the data plate on the rear of the machine (Figure 1). Overall machine dimensions:

Height: 45.3" (1150 mm)

Width: 23.6" (600 mm)

Depth: 30.3" 770 mm)

Weight: 190 lb (86 kg)

Like any equipment with moving parts, the machine inevitably produces noise. The construction system, paneling, and special provisions adopted by the Manufacturer are such that during work, the average noise level of the machine is less than 70 dB (A).

NOTE: The machine is intended for indoor use only.

PRINCIPLES OF OPERATION

In a single series of operations, the machine permits recovering and recycling refrigerant with no risk of release into the environment, and also permits purging the A/C system of humidity and deposits contained in the oil. The machine is equipped with a built-in evaporator/separator that removes oil and other impurities from the refrigerant recovered from the A/C system and collects them in a container for that purpose. The fluid is then filtered, recycled and returned to the tank installed in the machine. The machine also permits running certain operational and leak tests on the A/C system.

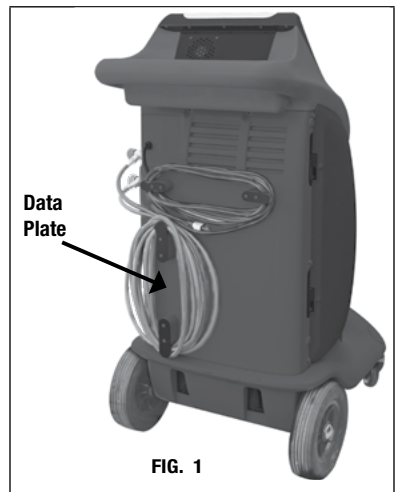


FIG. 1

THE MACHINE

BASIC COMPONENTS (Refer to Figures 2, 3, 4 and 5.)

- | | | | |
|----------------------------------------|-------------------------------------|----------------------------------|------------------------------|
| A. Visual Indicator Light | E. Waste Oil Bottle | I. Computer Command Center | N. Vacuum Pump |
| B. Low and High Side Analog Gauges | F. Cabinet Fan | J. Low and High Side Tank Valves | O. Vacuum Pump Vent/Oil Fill |
| C. Coupler Storage/Hose Flush Manifold | G. Wheel Locks | K. 30 lb DOT Tank | P. Vacuum Pump Oil Drain |
| D. Tank Filling Adapter | H. Low and High Side Machine Valves | L. Heater Blanket | Q. Filter Ball Valve |
| | | M. Heavy Duty Load Cell Scale | R. Filter |

FIG. 2



FIG. 3

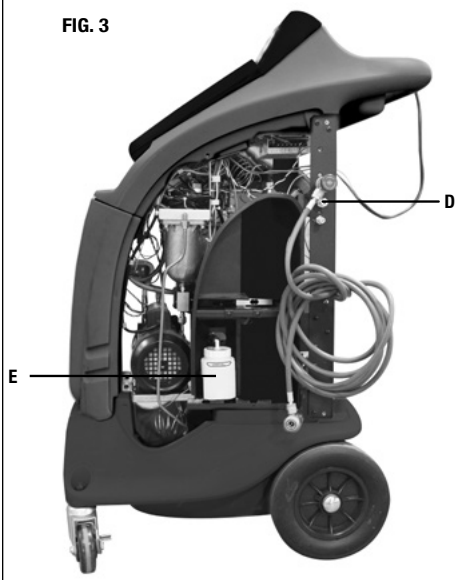


FIG. 4

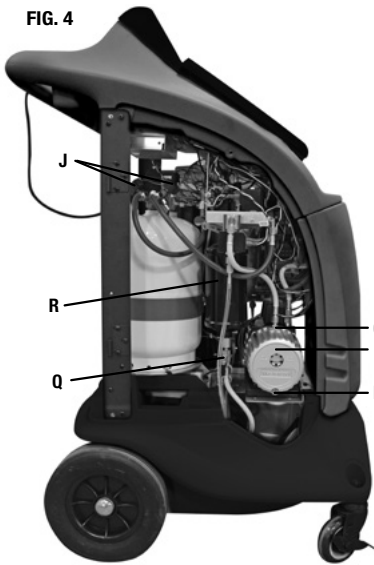
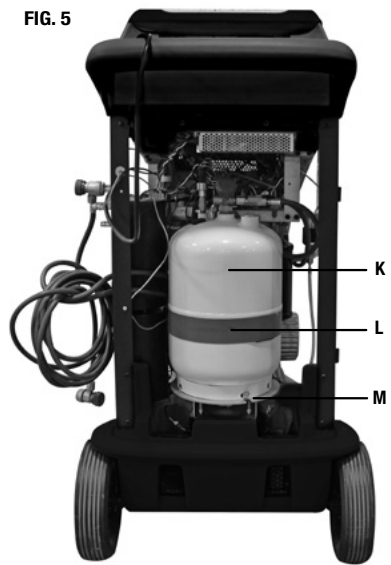


FIG. 5



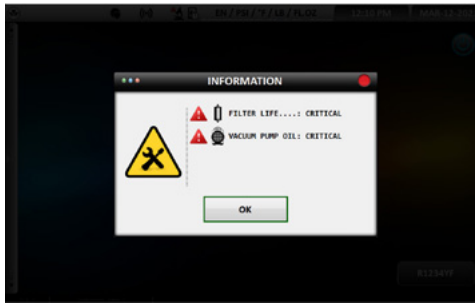
The COMMANDER4100 has the capabilities to perform reclamations on all standard and hybrid R1234yf vehicles.

To begin using the COMMANDER machine, turn the power switch to the "ON" position. The power switch is located on the front right of the machine. Allow a few seconds for the computer command center to power up. Upon initial startup the language screen will appear. Choose from one of the 18 languages programmed into the machine. Press the circle next to the language desired and press next. The command center will then display a series of welcome screens that will provide useful information to first time users.

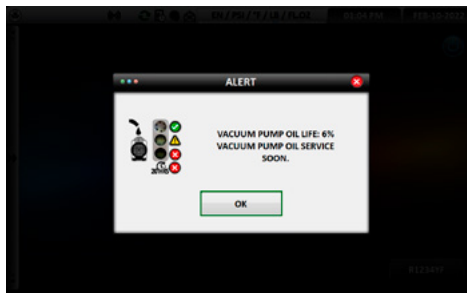
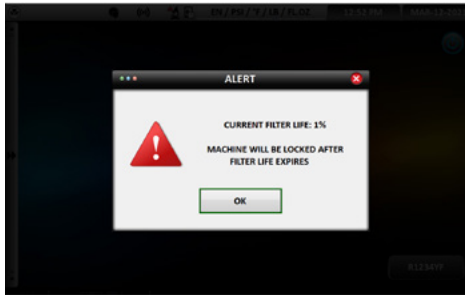
When the COMMANDER machine powers up the command center, it will display the automatic/manual screen for COMMANDER4100.

WHEN THE MACHINE STARTS UP IT WILL CHECK:

1. If purge is necessary
2. If filter life is critical (140 kg) or expired (160 kg)
3. If vacuum pump oil is critical (3.45 hrs) or expired (5 hrs)



If automatic/manual process is selected and the above conditions exist then a warning pop-up be displayed:

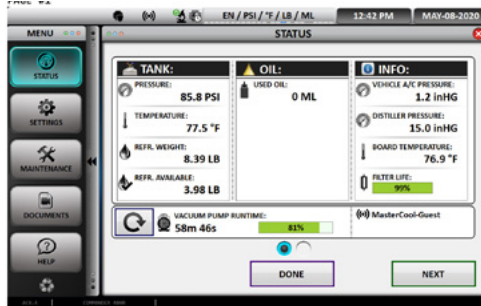


MAIN MENU

To access the MAIN MENU at any time press the small arrows (<<) on the middle left of the screen. The main menu consists of the following options: status, settings, maintenance, documents and help.



- STATUS:** This will display all the current information about the machine. Tank, Oil, Info and Vacuum Pump Runtime graphics will be seen at the top of the screen

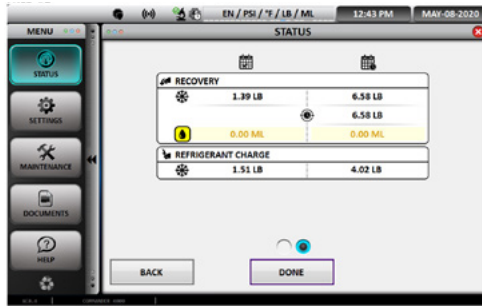


- TANK:** Displays internal pressure, tank temperature, total amount of refrigerant (refrigerant weight) and total amount of refrigerant available for charging
NOTE: Per SAE regulations a minimum of 2 kg (4.4 lbs) of refrigerant must be in the internal tank at all times. This is the difference between the displayed refrigerant weight and refrigerant available. Refer to refrigerant available when setting the vehicle refrigerant charge amount
- OIL:** Displays the volume of the used oil in the used oil bottle
- INFO:** Displays vehicle A/C pressure (when the hoses and couplers are connected to the vehicle and the valves on the machine are open and couplers are turned completely clockwise), distiller pressure (pressure/vacuum reading for the distiller), board temperature (the temperature of the circuit board) and filter life (percentage of remaining filter life.)
NOTE: Check periodically for the remaining filter life. Purchase a replacement filter before 100% is reached, or you will not be able to use the machine
- VACUUM PUMP RUN TIME:** Displays the total runtime since the last reset. It is recommended that you change the vacuum pump oil every 5 hours of run time. Press reset after oil change to zero out the timer
NOTE: Failure to change the vacuum pump oil can cause damage to the vacuum pump which may void warranty.

FILLING VACUUM PUMP WITH OIL:

- Open the side maintenance door to access the vacuum pump.
- Remove the red cap on top of the vacuum pump.
- Empty the oil bottle contents into the vacuum pump.
- Verify the oil fill; the oil should meet the oil fill line on the vacuum pump sight glass.
- Replace red cap and clean any excess oil.
- Press reset after oil change to zero out the timer.

Pressing NEXT on the bottom of the screen will display last and total refrigerant recovered and the refrigerant charge.

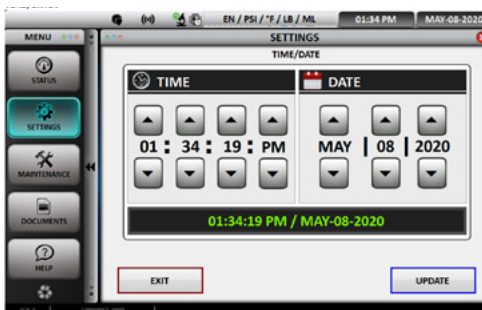


The values on the left side of the screen will display the last amount of recovered refrigerant and refrigerant charged. The values on the right side of the screen display the lifetime totals of recovered refrigerant and refrigerant charged.

- **SETTINGS:** This will allow the user to customize the time/date, language, units and printer of the COMMANDER machine



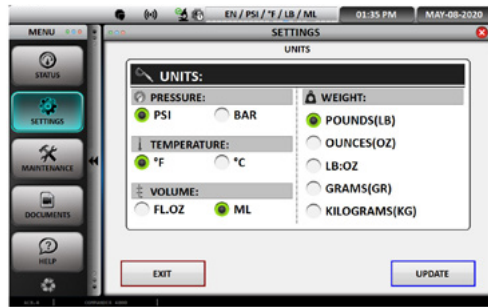
- **TIME/DATE:** To set the time and date press the corresponding up or down arrows. Press update to lock in the selection



- **LANGUAGE:** Choose from one of the 18 languages programmed into the machine. Press the circle next to the language desired. Select update to lock in the selection



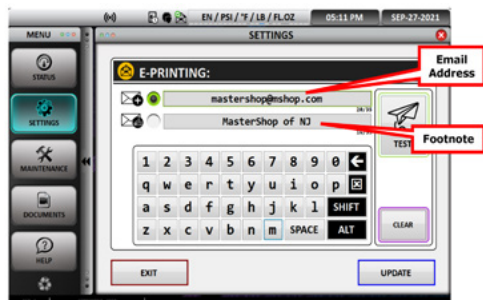
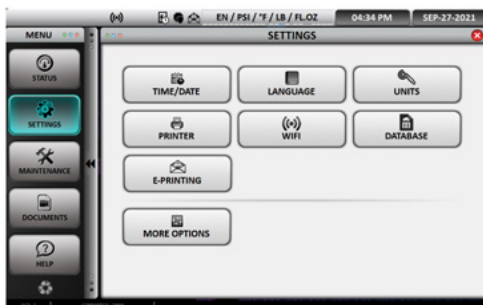
- **UNITS:** From the units screen select the desired pressure and weights that will be displayed on the machine. Pressure can be selected in PSI or BAR, Temperature in Fahrenheit or Celsius, Volume in fluid ounces (FL. OZ) or milliliters (ML), and Weight in pounds (LB), ounces (OZ), pounds and ounces (LB:OZ), grams (GR) or kilograms (KG). Select update to lock in the selection



- **WIFI:** Enter the wifi password to establish an internet connection for real time, interactive communication, troubleshooting and software updates.

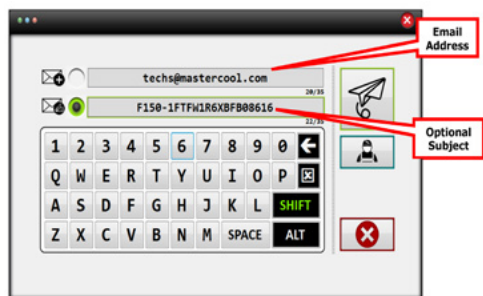


- **E-PRINTING:** When a job is finished the operator has the option to send this summary to a valid email account (E-PRINT). In SETTINGS/E-PRINTING the operator sets up the shop's email address and foot note. This information (done only once) is not required but highly recommended; so, for every e-printed summary sent, the shop will receive a :cc with the same information.

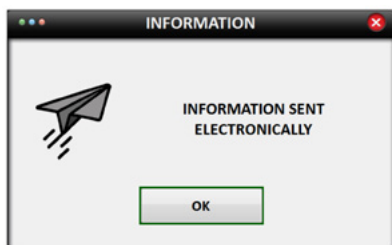


At the end of every job successfully completed, a summary is presented on the screen. The operator then has the option to send this summary to a customer's email address (e-printing).

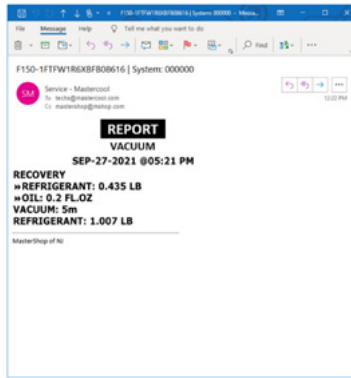
If e-printing is selected, then a pop-up will be displayed asking the operator to enter the customer's email address and an optional subject.



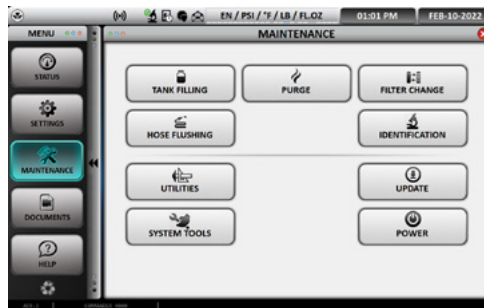
A summary will be sent to the customer's email and a .cc will be sent to the shop's email if defined in SETTINGS).



E-PRINTED SAMPLE (emailed summary)



- **MAINTENANCE:** This will display the required routine maintenance (tank filling, purge, filter change, utilities, hose flushing, system tools, identification and update) that needs to be performed

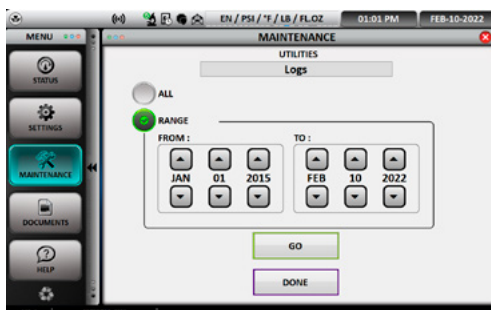
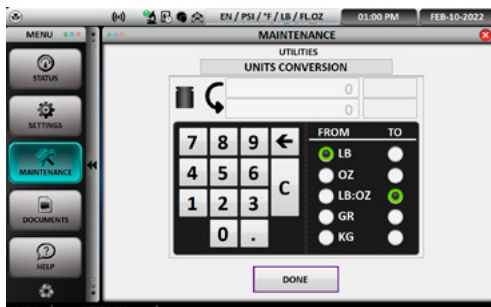
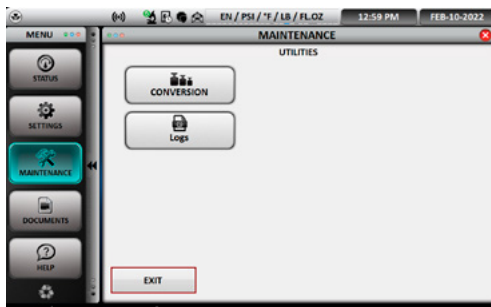


- **TANK FILLING:** Internal tank filling is preset to 15 pounds for optimal machine performance. This operation will be performed in the initial set up of the machine and whenever additional refrigerant is required. Refer to tank filling in the set up instructions
- **PURGE:** The purge feature allows the machine to manually purge NCG (air) from the internal storage tank. The operator can manually start the purge process and the machine will automatically stop when purge is complete. The machine also routinely performs this operation, automatically during the recovery process.
- **FILTER CHANGE:** The percentage of filter life can be viewed in the status screen. To change the internal filter, follow the instructions on the screen

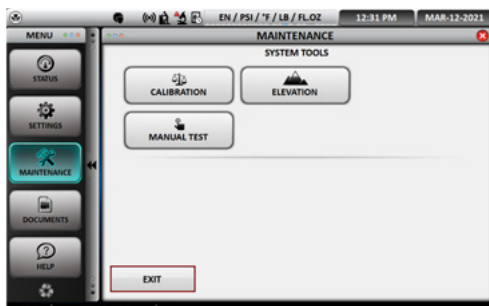
CAUTION: Please wear protective gloves and goggles to avoid a personal injury.

The filter should be changed quickly to avoid moisture entering the system. The new filter will come with a thumb drive that will be placed into the USB connection on the front of the machine. This will activate the new filter. Please read and understand the instructions that come with the new filter and thumb drive before starting the filter change process.

- **UTILITIES:** The machine has a conversion chart that will allow for the quick and easy conversion between units of measure and a logs tool which allows access to previously stored information.



- **SYSTEM TOOLS:** Allows the technician to: calibration, elevation and manual test

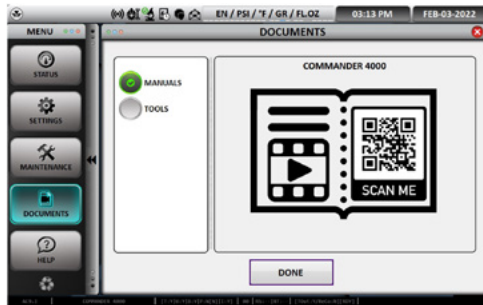


- **HOSE FLUSHING:** The hose flushing capability is used when switching from a standard R1234yf vehicle to a hybrid R1234yf system. This process is incorporated to ensure the removal of any non-compatible oil when switching from a standard to a hybrid system
WARNING: Failure to hose flush prior to servicing a hybrid can cause irreversible damage to

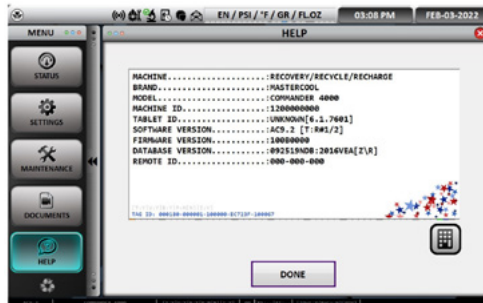
the A/C system and could cause the A/C compressor to conduct a deadly amount of electrical current.

Follow the instructions displayed on the screen.

1. Connect the couplers to the flush fittings on the side of the machine.
 2. Open the couplers by turning the knobs completely clockwise.
 3. Open the red and blue valves on the front of the machine. Press next to continue.
 4. The machine will now run a hose flushing cycle. This could take several minutes to ensure the removal of non-compatible oil. Press done to return to main screen.
- **IDENTIFICATION:** The identification process ensures that R1234yf refrigerant is in the system. Follow the instructions on the screen. This process will also be performed each time the machine begins the tank filling or recovery procedure
 - **UPDATE:** This is used for software updates via a USB connection
 - **DOCUMENTS:** Set up and operational information of the machine



- **VEHICLE FLUSH: Purchase of a flush hose required.** Vehicle flush uses the refrigerant to flood a closed A/C system in order to remove most of the A/C oil. The machine will drain any collected oil into the used oil bottle. The same quantity of new oil can then be injected into the A/C system to increase the compressor life.
NOTE: The condition of the A/C oil should first be checked to determine if flushing is necessary or appropriate. See Mastercool A/C System Visual Inspection Sight Glass.
- **HELP:** The help screen will display all the information about the machine. The machine part number, brand, model, machine ID, software version, firmware version and database version will be displayed



VISUAL INDICATOR LIGHTS:

The COMMANDER machines are equipped with visual indicator LED lights to inform on the progress of the machine.

- **RED:** No connection between USB and computer command center. Contact customer service
- **BLINKING RED:** Procedure Alarm. Contact customer service

- **YELLOW:** No communication between computer command center and PC board. Contact customer service
- **BLINKING YELLOW:** User attention needed to perform function displayed on screen
- **BLUE:** Machine in operation process
- **GREEN:** Process completed

COMMANDER MACHINE INITIAL SET-UP

- **USED OIL BOTTLE:** All machines have a used oil bottle, be sure to periodically dispose of the used oil in an appropriate container

- **INTERNAL TANK FILLING:**

IDENTIFICATION:

1. Wait for the identifying symbol (🔌) to appear on the middle top of the screen.
This will take 2-3 minutes
2. Press the small (>>) on the middle left of the screen
3. Select MAINTENANCE
4. Select TANK FILLING

NOTE: BE SURE THE TANK IS IN THE UPRIGHT POSITION WHEN IN THE REFRIGERANT IDENTIFYING PROCESS

5. The machine will now go through the identifying process. This will take approx. 5 minutes



6. When the identification process is complete the machine will alert to one of the following:
 - a.) If the refrigerant ID has passed the machine will continue with the tank filling process (see no. 7 below)
 - b.) If the refrigerant ID fails, follow the prompts to clear the hoses and exit.

TANK FILLING PROCESS CONTINUED:

7. The tank filling screen will be displayed. Tank filling is preset to 15 pounds for optimal performance. Press next.
8. The preset 15 pounds is the total amount of refrigerant in the tank. To change to a different amount, press "c" to clear then enter the total amount of refrigerant you want in the internal tank.
9. Follow the steps displayed on the screen.
10. Remove the tank adapter that is stored on the side of the machine between the hose holders. Connect tank adapter to external refrigerant source. The low side coupler will connect to the tank adapter allowing access to the external refrigerant source.
11. Connect the low-side (blue) coupler to the external tank and press next.
12. Open the low-side coupler by turning the knob clockwise, press next.
13. Open the valve on top of the external tank and press next.
14. Turn the external tank upside down for liquid flow and press next.
15. Open the low-side valve on the machine and press next.
16. The machine will now start to fill the internal tank and will automatically shut off when the tank is filled to approximately 15 pounds or to the target amount that has entered into the internal tank.

NOTE: The filling process can be stopped at any time by pressing exit.

17. When tank fill has completed, close the valve on the external tank.
18. Turn the blue coupler on external tank completely counterclockwise and remove.
19. Press next; the machine will automatically recover the remaining amount of refrigerant and

ready the machine for the next process.

20. The machine is now ready for operation. Press the arrows in the middle left of the screen to return to the start screen.

COMMANDER MACHINE BASIC OPERATION

Once the initial setup of the machine has been completed the machine is ready for operation.

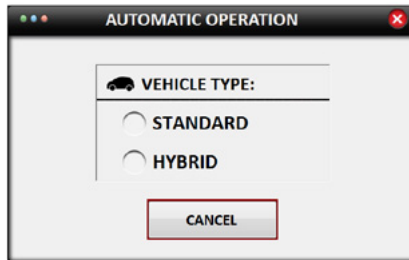
NOTE: The identifying symbol (🔧) must appear on the top, middle of the screen before any procedure can begin. The AUTOMATIC/MANUAL SCREEN will appear on the COMMANDER4100. Choose the reclamation procedure desired.

- **AUTOMATIC:** Recover, vacuum, vacuum leak test and refrigerant charge in continuous process
- **MANUAL:** Recover, vacuum or refrigerant charge can be done individually



NOTE: The top of the screen will display language, pressure, temperature, units' of measure for refrigerant, time and date. To change these settings please refer to the main menu instructions at the beginning of this manual.

Once an automatic or manual procedure is selected, the next screen shown allows for the selection of a standard or hybrid vehicle.



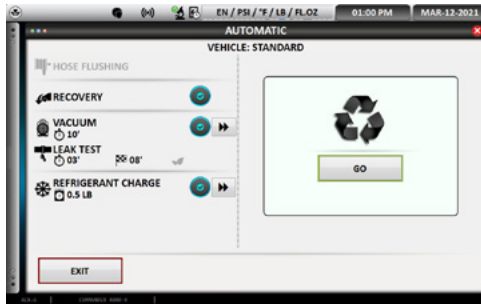
NOTE: Per SAE J2788, automatic oil injection for hybrid vehicles is prohibited. To inject oil into a hybrid vehicle, use a manual hermetically sealed oil injector. (Follow vehicle manufacture recommendations)

To use the COMMANDER4100 in AUTOMATIC MODE please continue below. If MANUAL MODE is preferred please skip to the manual section of these instructions.

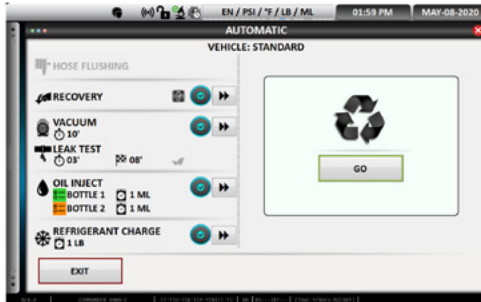
COMMANDER4100 AUTOMATIC PROCEDURE

AUTOMATIC SCREEN SETTINGS

The automatic screen will display hose flushing, recovery, vacuum, leak test, and refrigerant charge:

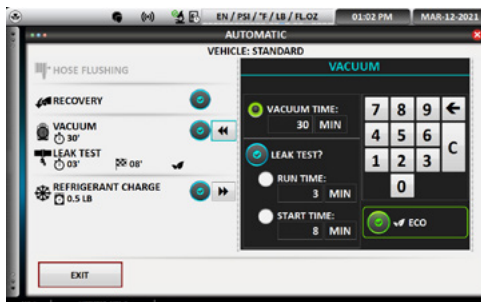


COMMANDER4100

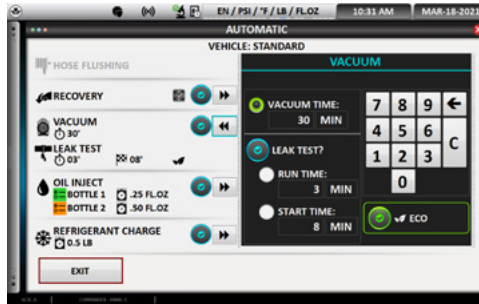


COMMANDER4100-E / COMMANDER4100-E-X

- HOSE FLUSH (IN HYBRID MODE ONLY):** This process will flush the machine of any residual oil that is not compatible with hybrid R1234yf systems. Follow the instructions on the screen
 1. Connect the red and blue hoses to the flush / storage fittings on the side of the machine.
 2. Open the couplers by turning the knobs clockwise.
 3. Open the red and blue valves on the machine. Press next.
 4. The flush cycle will now be performed.
 5. Flush complete will be displayed when finished .
 6. Disconnect couplers and attach them to the vehicle AC system.
- RECOVERY:** This procedure is preprogrammed. It cannot be changed in automatic mode.
- NOTE:** Before recovery begins the machine will automatically go through the identification process
- VACUUM:** To set the desired amount of vacuum time, press the >> to the right. Set vacuum time on the keypad, press << to lock in time



COMMANDER4100

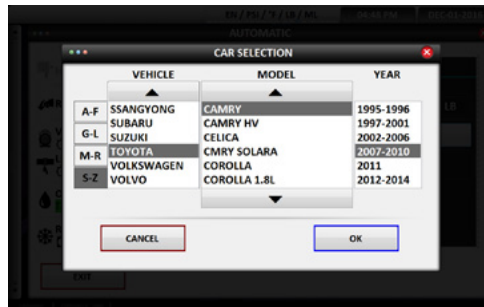


COMMANDER4100-E / COMMANDER4100-E-X

ECO: If the vacuum time is at least 30 minutes, then the eco option is available. When the eco option is activated the vacuum pump is turned off while performing the leak test to save vacuum pump oil life.

LEAK TEST: Vacuum leak testing is available when the vacuum time is 10 minutes or longer. Set the amount of time the leak test will run. Set the time at which the leak test should start.

- **REFRIGERANT CHARGE:** Press the >> to set the refrigerant charge. Use the keypad to set charge or choose the Database function
 - Database function: Allows the user to choose the refrigerant charge based on the make, model and year of vehicle. Press “Lookup” and choose the correct make year and model. The refrigerant charge will be automatically programmed.



NOTE: The Caution symbol will appear if the programmed charged amount exceeds the available amount. To add refrigerant, refer to tank filling.

NOTE: Press the “C” on the keypad to clear any value to enter a new value

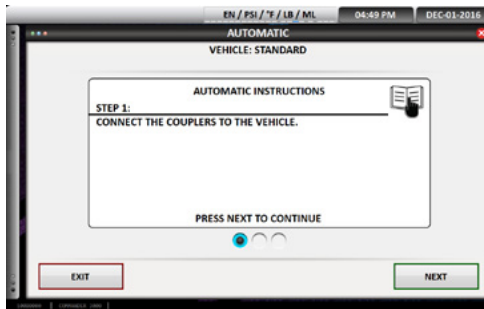
NOTE CONCERNING THE DATABASE: We have taken all due care in gathering and entering information contained in the database. The database data may nevertheless be considered purely as a reference, the manufacturer declines any and all responsibility for incorrect data.

To know for certain the charge amount look for the refrigerant label on the vehicle or call the manufacturer of the vehicle and request the charge amount.

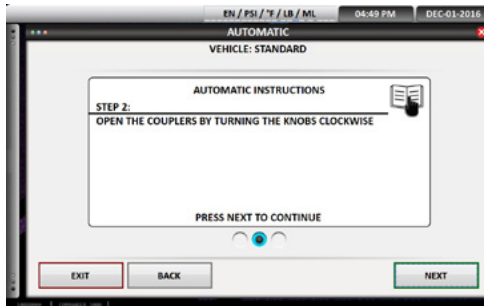
TO BEGIN THE AUTOMATIC PROCEDURE PRESS “GO” ON THE COMMAND CENTER SCREEN. The COMMANDER4100 is now ready to recover, vacuum, vacuum leak check (if vacuum is set for 10 minutes or longer) and charge the programmed amount of refrigerant.

Connect the couplers to the vehicle

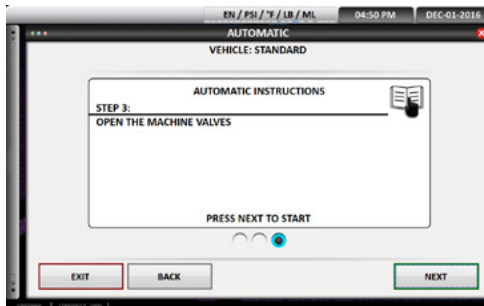
The COMMANDER4100 will now instruct to connect the couplers to the vehicle.



1. Connect the high side red coupler to the high side service fitting on the vehicle.
2. Connect the low side blue coupler to the low side service fitting. Press next to continue.
3. Open the couplers by turning the knobs clockwise until they stop. Press next to continue.



4. Open the blue and red valves on the machine. Press next to start the process.



NOTE: Each step in the reclamation process will be displayed with individual progress screens.

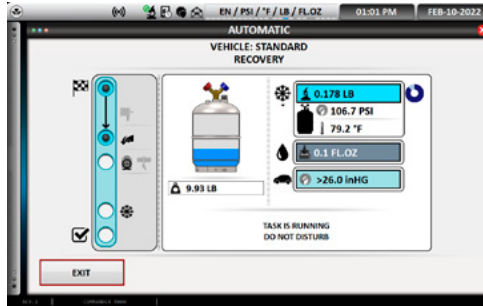
Identification

If the refrigerant ID process has passed the machine will automatically move on to recovery. If the refrigerant ID fails, follow the prompts to clear hoses and exit.

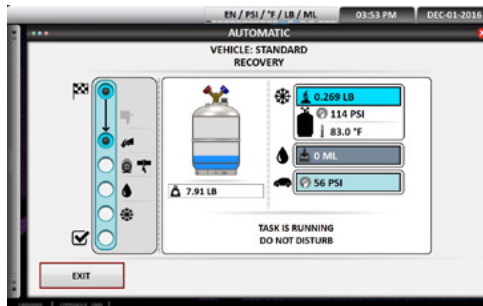


Automatic Recovery

The following will be displayed:



COMMANDER4100



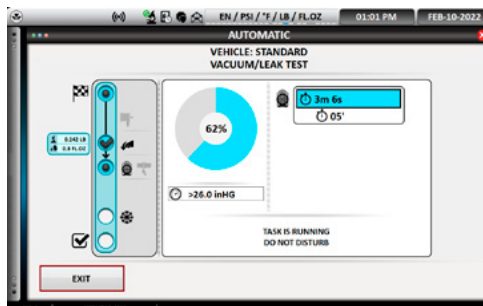
COMMANDER4100-E*

- Amount of refrigerant being recovered; numerically and in the tank graphic
- Tank temperature and pressure
- Amount of waste oil recovered
- Vehicle pressure
- Total weight of refrigerant in tank
- Progress procession graphic on the left of all screens

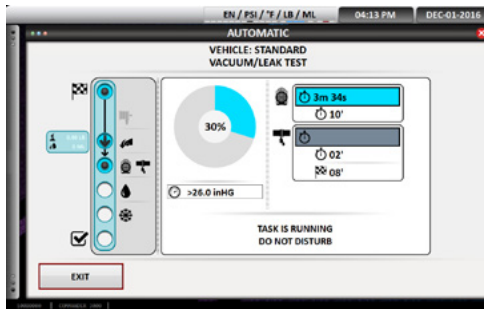
Automatic Vacuum/Leak Test

The default is a 10 minute vacuum/leak test. The vacuum pump will run for 8 minutes pause for 2 minute leak test and resume for an additional 2 minutes of vacuum.

The following will be displayed:



COMMANDER4100



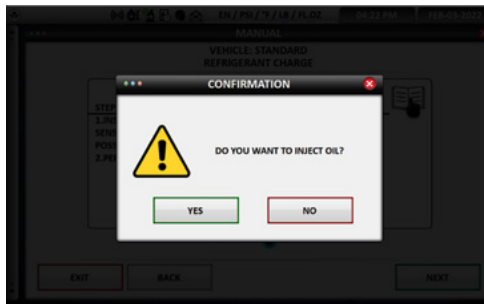
COMMANDER4100-E*

- Graphic and % of vacuum completed
- Time in minutes and seconds of completed vacuum
- Total vacuum time programmed
- Amount of vacuum leak test time if 10 minutes or more were programmed
- Current vacuum pressure

Automatic Leak Check Passed

- The screen display will go back to blue and continue with remaining vacuum time programmed if vacuum leak test is passed.
- If the vacuum leak test failed, LEAK TEST FAILED will be displayed. The machine will terminate the automatic process and return to the main screen.
 1. Turn the red and blue couplers counterclockwise and disconnect them.
 2. Find the leak and repair the system.
 3. If refrigerant was used to find the leak, perform automatic or manual procedure again to remove any refrigerant in system. Repair the leaks
 4. Perform vacuum and vacuum leak check again.

After vacuum leak check is passed, automatic charge will be displayed.



Oil Injection

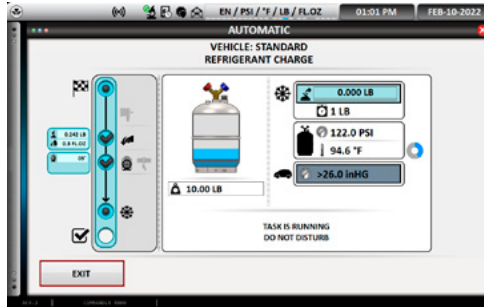


- DO NOT INJECT OIL AFTER THE VACUUM PROCESS
- DAMAGE TO THE IDENTIFIER MAY OCCUR
- WHEN USING AUTOMATIC OR MANUAL PROCEDURE, PLEASE FOLLOW THESE INSTRUCTIONS FOR OIL INJECTION
 1. Start the charge process
 2. Let the machine run the vacuum and decay process
 3. Let the machine charge 15%
 4. Check for evaporator leaks
 5. Check for rear evaporator leaks
 6. Before the "next" button is pressed
 7. **Disconnect the low side coupler and inject the oil**
 8. **Re-attach the low side coupler**

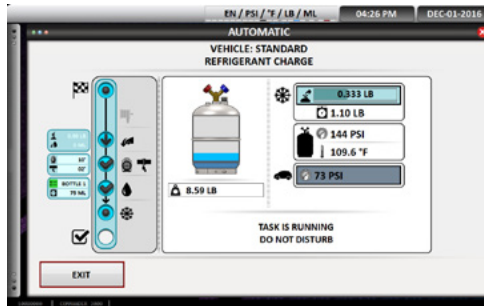
9. Press the “next” button

Automatic Refrigerant Charge

The machine will now automatically charge the pre-programmed amount of refrigerant. The following will be displayed:



COMMANDER4100



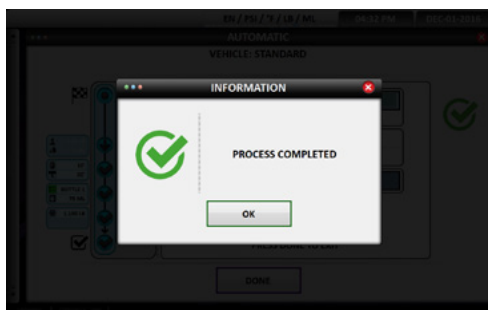
COMMANDER4100-E*

- Tank graphic and weight of refrigerant
- Numerical value of refrigerant charged
- Total weight of refrigerant to be charged
- Tank pressure and temperature
- Vehicle system pressure

Follow the instructions on the screen:

1. Enter the charge amount
2. The vacuum pump will run for at least 5 minutes
3. The machine will then check for vacuum decay for 5 minutes
 - a. If the vacuum decay fails, the process will end
 - b. If the vacuum decay passes, the machine will charge 15% of the total amount
4. The machine will instruct to leak check the A/C system and the evaporator
 - a. If no leaks are found, the process will continue
 - b. If a leak is found, the machine will go into recovery without needing identification and recovers the 15% of charge
5. The machine will instruct to leak check the rear evaporator if the vehicle has one
 - a. If no leaks are found, the process will continue
 - b. If a leak is found, the machine will go into recovery without needing identification and recovers the 15% of charge
6. The machine will now charge the remaining amount of refrigerant
7. Close the machine valves, run the vehicle and check the pressures
8. Turn the vehicle off, let the pressures equalize, close and remove the high pressure coupler.
NOTE: Failure to remove the high side coupler will cause damage to the compressor.
9. Start the vehicle and open the machine valves
10. Let the pressure equalize, close and remove the low-pressure coupler

11. The machine will clear the hoses
12. End of process will be displayed



COMMANDER4100 MANUAL PROCEDURE

Once manual is chosen, the machine will now display the screen where you can manually hose flush, recover the refrigerant in the vehicle, pull a vacuum for the programmed amount of time, perform a vacuum leak check, or charge a programmed amount of refrigerant into the system. Each of these processes will be performed individually. As each function is completed, “process complete” will be displayed on the screen and the visual indicator light will turn green.

NOTE: Allow the machine to complete the process on its own. Terminating a process will cause the machine to work in an unpredictable way. Some maintenance might be required to restore the machine to proper working order.

Hose Flush (In Hybrid Mode):

1. Press the hose flushing button. Press go
2. Connect the couplers to the fittings on the side of the machine. Press next
3. Open the couplers by turning the knobs clockwise. Press next
4. Open machine valves. Press next
5. The hose flushing screen will now be displayed. The machine will use some of the refrigerant in the internal tank to flush out the hoses. This process is used when switching from standard vehicle to hybrid vehicle. This process will ensure the removal of any non-compatible oil before working on a hybrid vehicle.
6. “Process complete” will be displayed when finished

Recovery:

1. Press the recovery button, press the GO button to start the refrigerant recovery.

NOTE: The machine will now go through the identifying process. This will take approx. 5 minutes



When the identification process is complete the machine will alert to one of the following:

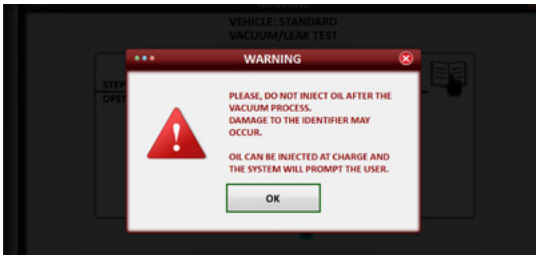
- a.) If the refrigerant ID has passed the machine will continue with the recovery process (see below)
 - b.) If the refrigerant ID fails, follow the prompts to clear hoses and exit.
2. Follow the directions on the screen.
 3. Connect the couplers to the vehicle. Press next to continue.
 4. Open the couplers by turning the knob clockwise. Press next to continue.
 5. Open the machine valves. Press next to continue.

- The recovery screen will now be displayed. The screen will show the total amount of refrigerant in the tank, the amount of refrigerant being recovered, the tank pressure and temperature, the amount of waste oil removed and the vehicle AC pressure.
- When the recovery is complete “process complete” will be displayed.

Vacuum:

- Press the vacuum button.
- Use the keypad displayed to program in desired vacuum time. The vacuum is pre-programmed for 10 minutes which includes a two minute vacuum leak check. If the vacuum leak check is not desired press the leak test button to disable it. Press the “C” button on the keypad to clear out the time then program in the desired vacuum time. Press the double arrows to lock in the vacuum time.
- Press the go button, follow the instructions on the screen. Connect the couplers to the vehicle, press next. Open the couplers by turning the knobs clockwise, press next. Open the Machine valves, press next.

NOTE: Please do not inject oil after the vacuum process. Damage to the identifier may occur. Oil can be injected at charge and the system will prompt the user - ADDED 11/3/21 per Agustín/Tom



- The vacuum procedure will now be performed.

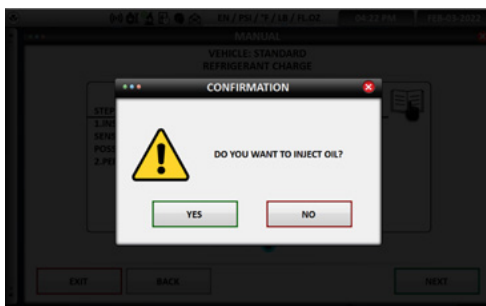
ECO: If the vacuum time is at least 30 minutes, then the eco option is available. When the eco option is activated the vacuum pump is turned off while performing the leak test to save vacuum pump oil life.

Refrigerant Charge:

- Press the refrigerant charge button, use the keypad to program in the desired refrigerant charge. You may also use the database option to look up the year make and model of the vehicle. Press the double arrows to lock in your selection. Press the go button.
- Follow the instruction on the screen.
- Connect the couplers to the vehicle, press next
- Open the couplers by turning them clockwise, press next
- Open the Machine valves. Press next
- The machine will now charge the programed amount of refrigerant. The refrigerant charge screen will be displayed. This screen will display the amount of refrigerant in the internal tank, the refrigerant being charged, the total amount of refrigerant programmed, the tank pressure, temperature and vehicle pressure. When the charge is finished “process complete” will be displayed and the visual indicator will turn green.

NOTE: COMMANDER4100 after the initial charge

The system will prompt the operator if oil needs to be injected and if so follow the instructions on the screen.



Oil Injection:



- DO NOT INJECT OIL AFTER THE VACUUM PROCESS
- DAMAGE TO THE IDENTIFIER MAY OCCUR
- WHEN USING AUTOMATIC OR MANUAL PROCEDURE, PLEASE FOLLOW THESE INSTRUCTIONS FOR OIL INJECTION
 1. Start the charge process
 2. Let the machine run the vacuum and decay process
 3. Let the machine charge 15%
 4. Check for evaporator leaks
 5. Check for rear evaporator leaks
 6. Before the “next” button is pressed
 7. **Disconnect the low side coupler and inject the oil**
 8. **Re-attach the low side coupler**
 9. **Press the “next” button**

End of Charge / Hose Clearing Process:

This process allows for the verification of the operating AC pressures and the removal of refrigerant from the hoses into the internal tank. The machine will then perform a short vacuum to prepare for the next vehicle. Follow the instruction on the screen.

1. Close the high and low side valves on the machine, press next to continue.
2. Close and remove the high side coupler. Press next to continue.
3. Start the vehicle, turn the AC system on high. Press next.
4. Open the valves on the machine. Press next.
5. Allow the AC system pressures to equalize. Press next
6. Close and remove the low side coupler, turn off the vehicle. Press next.
7. Hose clearing will be displayed. The tank graphic with weight will be displayed. The tank pressure and temperature will be displayed.
8. The machine will recover any residual refrigerant and ready itself for the next vehicle.
9. Process Completed, will be displayed when finished.

If you have difficulty with a procedure please call
Mastercool's Technical Service at 973-252-9119

⚠ WARNING: This product can expose you to chemicals including lead and Di (2-ethylhexyl) phthalate, which are known to the State of California to cause cancer and birth defects or other reproductive harm. For more information go to www.P65Warnings.ca.gov